



Weston Bulletin

A newsletter for the community of Weston Public School

Term 2 Week 7

Wednesday 6th June, 2012

Quote for the Week

We cannot always build the future for our youth, but we can build youth for the future.

~ Franklin Delano Roosevelt~

Important Dates for Term 2 2012

JUNE

Friday 8	Bike Bus
Monday 11	Queen's Birthday - Public Holiday
Tuesday 12	Last day for Book Club Orders
Thursday 14	School Disco
	Pie Drive orders due back in
Monday 18	School Photos
	P & C Meeting - 7 pm
Friday 22	Pie Drive orders delivered to school
Friday 29	Last day of term

**** **Please Note: the Canteen is only open on a Thursday and Friday at this time.** ****

**** School Bucket hats are now \$5.00 ******

****No sun safe hat play in the shade****

Dear Parents, Carers and Community

Let's welcome all the beautiful weather - warm clothes are a necessity!

Well done to Queen Elizabeth for 60 Years as the Queen. Try to watch the TV coverage with your children as it gives a great view of the way of people in a different English culture, it's also great viewing as a travelogue, for pomp & ceremony, fashion and a lead into our history and government.

Nits / Head Lice

These critters never really go away, they're always waiting to be passed along from head- to -head, to clothes etc. The Health Department says everyone who

gets them needs to do a thorough hair and household clean. However it's easy to pick them up and the cycle starts continues.

We will try to get a speaker to come in and give and information talk on controlling Nits.

If you'd be interested in attending please complete the tear-off section and return.

Late Arrivals

At present we have a large number of students who are consistently arriving late to school. Please make sure your child gets to school on time as it is important that their morning lessons are not missed.

Public Holiday

Don't forget Monday June 11 is a public holiday (Queen's Birthday), we hope everyone enjoys the long week end.

Every Student , Every School

As the Dept of Education and Communities reorganises its student services sector, changes will occur. Our school will receive an increase in staff from a three day a week learning support teacher to a full time learning support teacher plus an extra half a day person. Our actual integration of students funding dollars will be less but this is basically covered by the increase in staff plus a resources allocation. Some integration funds for some students will be cut back but these students will receive assistance from the Learning Support Teacher and some will continue with aide support.

Local School, Local Decisions

The DEC is also moving towards providing more authority and autonomy for Principals in the "running" and administration of schools. These changes will help to bring communities and schools closer to assist in running local schools.

"Through our gates pass the nicest people."

National Curriculum

Facilitating the delivery of the same curriculum for all students across Australia prompted our governments to get together and produce (so far) four common curriculum areas; these are English, Mathematics, Science and History. Many changes are happening, so watch the news services for recurring updates.

Attendance

Some parents were sent letters to encourage them to provide information regarding student absences. If you received a letter, please respond immediately. If you have difficulty, you are invited to visit the school between 9:00am and 12 noon tomorrow to speak with the DEC's Home School Liaison Officer and/or she will be phoning / visiting you..

Student Welfare Policy (p9)

It is important for parents / carers / students to remember that we give students 20 points to start each school year for assisting with behaviour monitoring. Student lose points for misbehaviour and gain points back for appropriate behaviour. Children who have fewer than 18 points do not get included in events where teacher time is given voluntarily for out of school time excursions / events. (eg: Discos, overnight trips etc.) Children with diagnosed disabilities can be supported / accompanied by parents on these occasions in most cases because our points system for them also includes a personalised behaviour / learning plan.

***Thank you for your continued support
Mr A. Withers - Principal***

**Emergency Care Plan -
(Medical / Medication Update)**

We are currently updating our School Emergency Care Plan for students. This helps us in giving children the correct medication at the right times and caring for them if they have allergies etc. If your child has an allergy eg: peanuts, bee stings, asthma (and uses a puffer) and / or is currently taking medication at the school we would like you to fill out the form at the end of the Bulletin and return it to the front office as soon as possible. Thank you for your assistance.

Bike Bus Friday June 8

Don't forget our Bike Bus will run again this Friday. We will meet at 8.15am on the corner of First Street and Station Street. We will travel along First Street, Kline Street, Eighth Street, McBlane Street, O'Toole Street and then back along Fourth Street to school by 8.40am.

We will then travel along Weston Street, Tenth Street, Government Road, Ninth Street, Fifth Street, and Swanson Street before returning back to school before 9.10am. We ask any parents to join us if they would like to ride with their child/children to school; please let us know. All students will return in the afternoon under supervision of the bike bus.

P & C NEWS**P & C Meeting**

Our next P & C meeting will be held on June 18, 2012 at 7pm in the staffroom. All welcome. The meetings only go for around 1 hour, so please come and join us for a cuppa and a chat.

Pie Drive Reminder

Order forms and money are to be returned by Thursday 14th June and orders will be delivered to the school Friday 22nd June. Spare forms can be picked up from the office.

***Mandy Johnson
(P & C Secretary)***

**Coalfields NeighbourCare
JUST 2 HOURS A FORTNIGHT**

Do you have it to spare?

Volunteers are needed to assist those in need with a range of services

Meals on Wheels

Transport to medical appointments

Shopping assistance

We will arrange days to suit your schedule and circumstances

You don't always need a car but if you use your own car, a car allowance is paid.

You do need a little kindness, patience and a big smile.

Reward yourself and become a
VOLUNTEER!

Coalfields NeighbourCare Inc. is the largest community service organisation in the Cessnock LGA and supplies Meals on Wheels, Neighbour Aid, Transport, Personal Care and Domestic Assistance. Call Wendy or Lorraine today on 4930 4706 for a chat about what is involved.



Education &
Communities

Public Schools NSW

Compulsory school attendance

Information for parents



Did you know that if a student misses as little as eight days in a school term, by the end of primary school they will have missed over a year of education?

The compulsory years of schooling

In New South Wales, all children from six years of age are legally required to attend school or be registered for home schooling. After they complete Year 10 and until they turn 17 years of age, students then have the following options. They may also be in:

- full-time further education and training (e.g. TAFE, traineeship, apprenticeship);
- full-time, paid employment of an average of 25 hours per week; or
- a combination of both of the above.

Children are expected to attend all school activities, on time. Regular attendance helps your child:

- develop the skills needed to access the world of work and other opportunities
- to learn the importance of punctuality and routine
- make and keep friendships.

What if my child has to be away from school?

If your child has to be absent from school, you must tell the school and provide a reason for your child's absence. To explain an absence parents and carers may be required to:

- send a note to the school, or contact the school via electronic means such as SMS text message, fax or email, or

- telephone the school, or
- visit the school.

A small number of absences may be accepted by the principal. For example, if your child:

- has to go to a special religious ceremony
- is required to attend a serious or urgent family situation (e.g. a funeral)
- is too sick to go to school or has an infectious illness.

What are school Principals responsible for?

Principals help to ensure the safety, welfare and wellbeing of your child. Principals have to keep accurate records of student attendance and the reasons for any absences. Principals are responsible for accepting or not accepting a parent's explanations for their child's absences. Principals may request further information from parents for long or frequent absences, even where they are explained by parents as being due to illness.

When absences are unexplained by parents, or the explanations are not accepted by the principal, the school will work with parents to help address the issue. The main aim is to sort out what is preventing the child from getting to school and putting strategies in place to help. Sometimes, the school will ask support staff and other agencies to assist.

What might happen if my child continues to have unacceptable absences?

It is important to understand that the Department may take further action where children of compulsory school age have recurring numbers of unexplained or unacceptable absences from school. Some of the following actions may be undertaken.

■ Attendance meetings and compulsory attendance conferences

Parents (and sometimes their child) can be asked to go to a meeting with school personnel and other regional officers. The aim of the meeting is to help identify strategies to support the child and family. Other agencies may also be invited along to help, if parents agree.

If the school and other regional officers have tried to help improve a child's attendance, without success, parents (and sometimes their child) can be asked to go to a compulsory attendance conference. The conference will be run by a trained conference convenor. The aim of the conference is for the school, parents (and sometimes their child) and other identified agencies ("the parties") to further identify the issues which are impacting on a child's attendance.

The outcome of a compulsory attendance conference is for the parties to agree to undertake certain actions to improve the child's attendance. These actions are written in the form of undertakings.

■ Applications to the Children's Court – A Compulsory Schooling Order

Legal compliance can be sought through an application to the Children's Court for a Compulsory Schooling Order. The aim is to assist a family and/or child to address the issues which are preventing satisfactory school attendance but has the added enforcement of a Court's powers.

■ Prosecution in the Local Court

If all attempts by schools and regional support staff fail to improve a student's attendance, action can be taken in the Local Court and the result can be fines up to a maximum of \$11,000.

Further information regarding school attendance can be obtained from the following websites

Policy, information and brochures:

<http://www.schools.nsw.edu.au/gotoschool/a-z/attendance.php>

The school leaving age:

<http://www.schools.nsw.edu.au/leavingschool/index.php>

Do you need an interpreter?

Interpreting services are provided, where possible, for parents/carers who do not speak or understand English well and for Deaf parents/carers who use sign language. The Telephone Interpreter Service is available 24 hours a day, seven days a week at the telephone number: 131 450. You will not be charged for this service.

See the website address:

http://www.immi.gov.au/living-in-australia/help-with-english/help_with_translating/

Tell head lice to nick off!

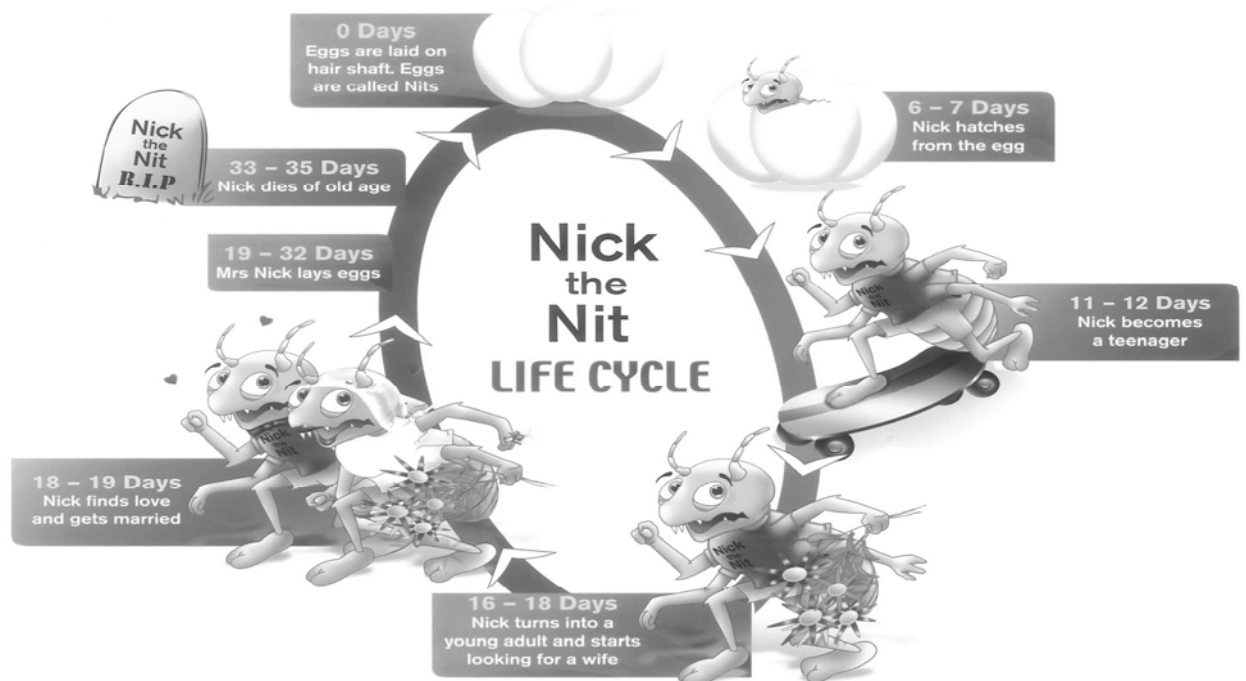
How to control head lice

- 1 Detect**
Use metal comb and combing solution to detect and remove head lice and their eggs
- 2 Treat**
There are 2 major commonly used head lice treatments; medicated and natural. Use either treatment to kill head lice and break their life cycle
- 3 Prevent**
Use egg remover and a metal comb to kill eggs and remove them from the head
- 4 Repeat**
Repeat the process after 7 days to effectively kill the cycle
- 5 Clean**
Wash bed linen and clothes in warm water with soaking solution to get rid of lice from home



How to identify head lice

- Head lice can be anything from greyish white to white in colour
- They are the size of a sesame seed
- Nits are the eggs, yellowish white in colour and are found on the hair shaft generally at the nape of the neck
- Adult lice may be found anywhere on the head
- Red bite marks or scratch marks are often seen on the back of the neck
- The eggs are sometimes mistaken for dandruff
- It takes several weeks exposure to the lice before itching develops
- Remember:
 - ✓ Head lice has nothing to do with hygiene
 - ✓ Head lice don't like short and plaited hair
 - ✓ The lice don't hop, jump or fly
 - ✓ Don't share hats, head bands or pillows





CESSNOCK DENTAL CLINIC
View Street CESSNOCK NSW 2325

Cessnock Dental Clinic has moved to the grounds of Cessnock Hospital.

They can be contacted on the following numbers:

Phone: 4991 0380 Fax: 4991 0385

We encourage you to call for a visit or checkup.....

Thank you: Denise Parker (Dental Therapist)

Information Session about Head Lice
Please return to the office.

Dear Parents

At present we have had a constant run on head lice. If we can organise an information session to help combat head lice within the school, please indicate below, and send this slip back to the office.

YES, I would be interested in attending an information session on controlling head lice.

Parent's Name: _____ Contact No.: _____

Signed: _____ Date: _____

Medical / Medication Information - Update
Please return to the office.

Child's name: _____ Class: _____

Medical Condition: _____

Medication/s: _____ Time given: _____

Dosage: _____

In case of emergency phone:

Name: _____ Phone No.: _____

Name: _____ Phone No.: _____